



# SCALER



## Scaler PT-A



**35 National Patents 5 Invention Patents**  
 Air polishing+ Ultrasonic periodontal treatment +  
 Endodontic treatment + Implant maintenance  
 Efficient and comfortable plaque removal

### Modern scaling solutions for both supragingival and subgingival scaling



Small-caliber nozzle,  
 more concentrated air  
 polishing



Anti-blocking system  
 reduces blocking



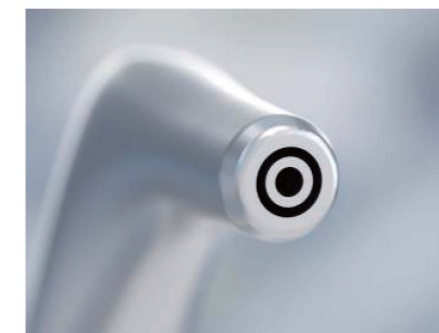
Air polishing + Perio + Endo +  
 Implant maintenance



Large screen smart touch control



Automatic identification of  
 scaling mode



Small-caliber nozzle



Multi-function foot pedal



**AJJ**  
 HEALTHCARE MANAGEMENT PTE LTD

## Elliptical vibration



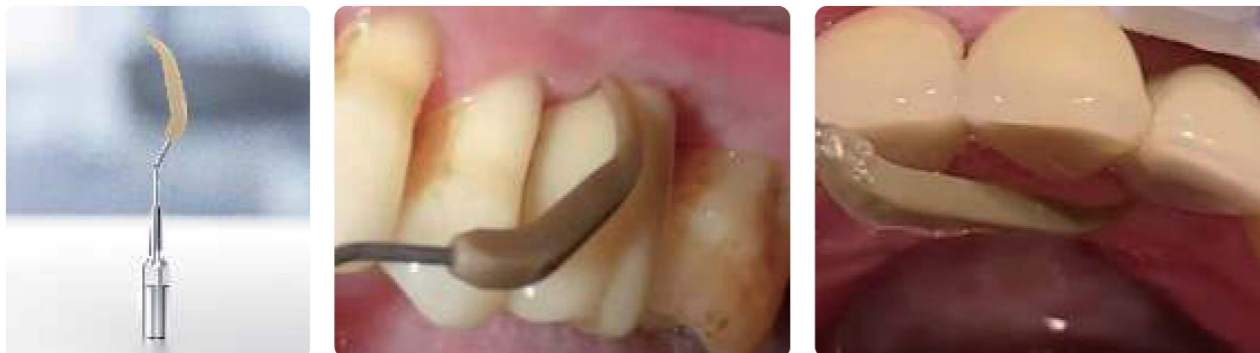
The elliptical vibration trajectory can achieve 0° angle operation between the tip and the tooth surface, enabling the polishing effect.  
Disperse the impact force between the tip and the teeth to achieve comfortable scaling.  
Achieve 360° scaling.

## Titanium alloy tip

The hardness is lower than dental enamel, more flexible and more comfortable.  
Titanium alloy tip hardness: HRC30  
Stainless steel hardness: HRC50

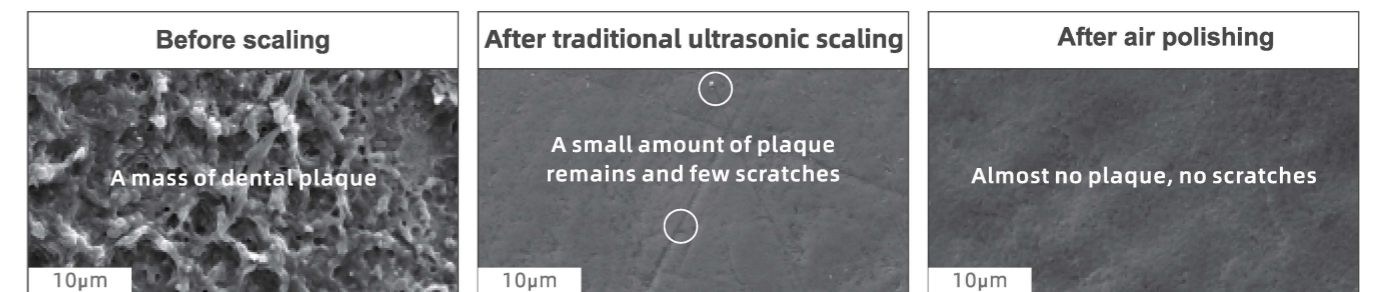


## Implant maintenance



## Effective protection of teeth surface

The hardness of the powder is much lower than that of the tooth enamel, so the scaling treatment can better protect the teeth, avoiding tooth surface damage caused by traditional over-scraping, and making the treatment more endurable for patients.



## Thorough removal of plaque

Air polishing can achieve significant scaling effect in the occlusal surface, adjacent surface, orthodontic brackets and other difficult-to-clean areas.

## Reduce plaque and pigment adhesion

After ultrasonic scaling or manual scaling, patients are likely to feel that the teeth surface is rough and uneven. The main function of air polishing is to polish teeth surface. After polishing, the tooth surface is smoother, and the plaque and pigment are less likely to adhere to it.





### Plaque Control

Small-caliber nozzle, more concentrated air polishing, and more efficient plaque removal  
High concentricity of water and air path achieves a good coating of powder by water and reduces the flying of powder.



### Dual water supply

Equipped with two water supply bottles (600mL, 1400mL) made of anti-corrosive materials. They can contain special chemicals such as chlorhexidine, hydrogen peroxide, and sodium hypochlorite. External water supply is also available. Water heating unit makes the treatment more endurable.

### Three-section Air polishing Handpiece, easier for cleaning

Lightweight handpiece  
Longer service life



### Classic sodium bicarbonate powder

Average particle size: about 65 microns; hardness is less than that of enamel, doing no harm to teeth  
Contain natural plant-derived essence for a more pleasant taste.  
The powder is waterproof to prevent the device from being blocked by wet powder.

Teeth	Moh's hardness	Powder	Moh's hardness
Enamel	4-5	Sodium bicarbonate	2.5
Dentin	2-2.5	Glycine	2
Cementum	2-4	Calcium carbonate	3
		Aluminum hydroxide	3

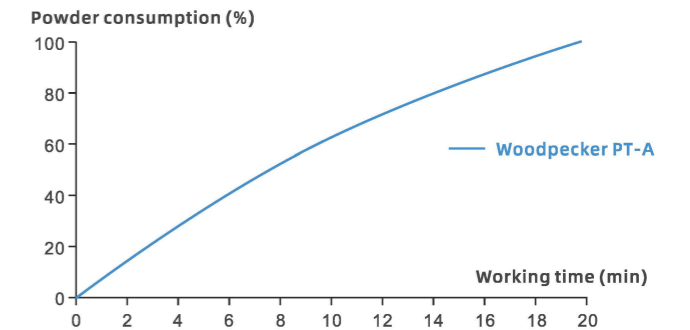


### Funnel-shaped powder tank, more stable powder flow

It can be quickly plugged and removed for easily adding powder.



Working Time and Powder Consumption of PT-A



### Multi-function foot pedal

- Water-free Mode
- BOOST Boost Mode
- Washing Mode
- Standard Mode



## Root canal treatment

Root canal irrigation (E60)



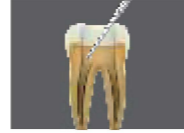
Removal of medullary calcifications and bad fillings (E3D)



Removal of calcifications at upper 1/3 of root canal and root canal orifice (P4D)

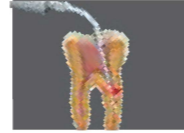


Root canal orifice locating (E12D)



Diamond-coated, ball head, for locating root canal orifice with security, accuracy and efficiency.

Root canal retreatment, removing foreign substances (E6 E7 E14 E15)



Special materials (E6 E7)  
Thin, flexible, good conductivity to ultrasound efficiency.

## Ultrasonic periodontal treatment

Save supragingival and subgingival ultrasonic scaling. Elliptical vibration track disperses the impact force between the tip and teeth. The hardness of titanium alloy tip is lower than that of cementum and enamel, doing no harm to teeth.

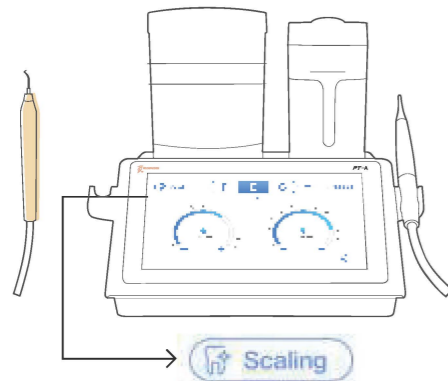


Before

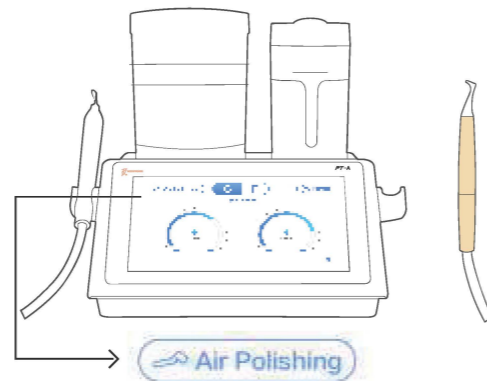
Under scaling

After

## Automatic identification of scaling mode



Pick up the Ultrasonic Handpiece to automatically enter the Ultrasonic Scaling Mode



Pick up the Air Polishing Handpiece to automatically enter the Air Polishing Mode

## Accessories

### Main unit + Air-powder sterilizing box and Ultrasonic sterilizing box

#### Air-powder sterilizing box

For sterilization and storage of Air Polishing Handpiece and cleaning needle

#### Ultrasonic sterilizing box

For sterilization and storage of Ultrasonic Handpiece and cleaning needle

#### Outer box

For storage of all PT-A accessories

### Standard configuration

Ultrasonic handpiece	x1	Sterilizing box	x3	Powder tank	x2
Air polishing handpiece	x2	Water bottle	x2	Water pipe air pipe	x2
Torque wrench	x2	Multi-functional foot pedal	x1	Needle	x2
Tip P33	x2	Tip P59	x1	Power adapter	x1

#### \*Gift

Ultrasonic handpiece x1  
Woodpecker powder x2  
Titanium alloy tip P56x2, P59x1, P50Lx2, P50Rx2  
Implant maintenance tip P94x1, P95x1  
Endo irrigation tip E60x2

# ULTRASONIC SCALER

