

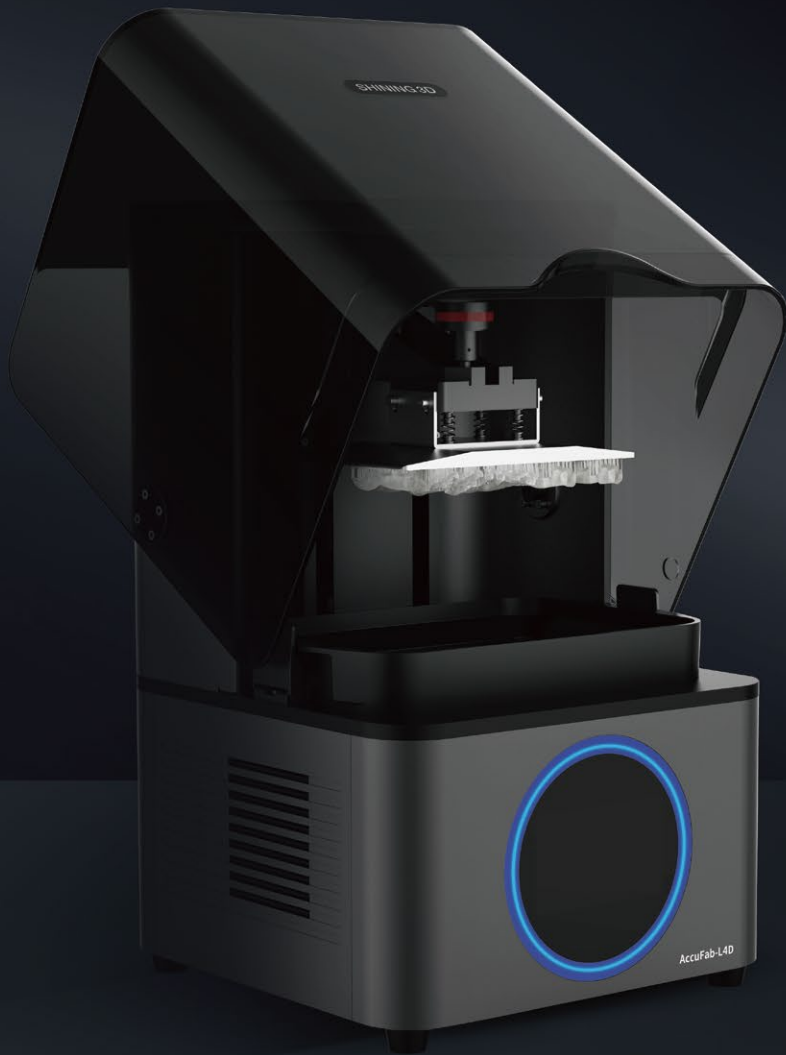
AccuFab-L4D Dental 3D Printer

Lit Up For Dentistry



AJJ
HEALTHCARE MANAGEMENT PTE LTD





AccuFab-L4D

Large-format Dental 3D Printer

AccuFab-L4D is the latest addition to the SHINING 3D family digital solutions. It is a large-format dental 3D printer developed completely in-house by SHINING 3D to make 3D printing solution more accessible to everyone. It brings users an exceptionally unique printing experience with its features like light-weight, large print size and user-friendly operation.



4K

Large Print Size, High Resolution

192*120mm printing size and 4K resolution satisfy the demands of users for efficiency and details .



User-friendly Operation

SHINIING 3D's self-developed printing software AccuWare comes with a guided workflow to assist users through the printing process for an easy and convenient operation. It boasts of smart layout planning, one-click support generation and one-click printing, which make it quite easy to get started.



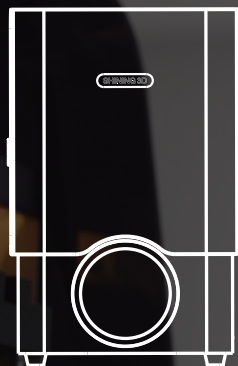
Cost-effective Investment

Compact and cost-effective AccuFab-L4D helps users accomplish easy digital transformation.



Multiple Material Options

SHINIING 3D's SHINIING DENT covers a wide range of resin materials for dental printing applications, like working model, ortho model, surgical guide, cast wax and gingiva mask.



More Than Your Expectation

AccuFab-L4D's comprehensive functions contribute to take users' dental digitization process up to another level. It supports different dental applications such as dental model, ortho model, surgical guide and so on.

Light Weight, User Friendly

In order to make the 3D printing technology more accessible for more users, AccuFab-L4D incorporates a number of intuitive designs to simplify the whole process from data preparation and slicing to operation and maintenance.



Guided Interactive Operation

5 steps: Print Setting- Open File
-Layout - Support - Slice.



UVMP Technology *

Self-developed SHINING 3D
technology, significant
optimized printing accuracy.



200% Optical Efficiency

Optimized optical path configured to
improve the optical efficiency to 200%;
it only takes 25 minutes to print a full
plate of 8 orthodontic models.



Link between IOS and 3D Printer

Independently developed
editing tool provides users with
model editing functions, linking
the scan and print process
beyond expectation.



Layer Preview

Preview the sliced data in
advance to ensure successful
printing.

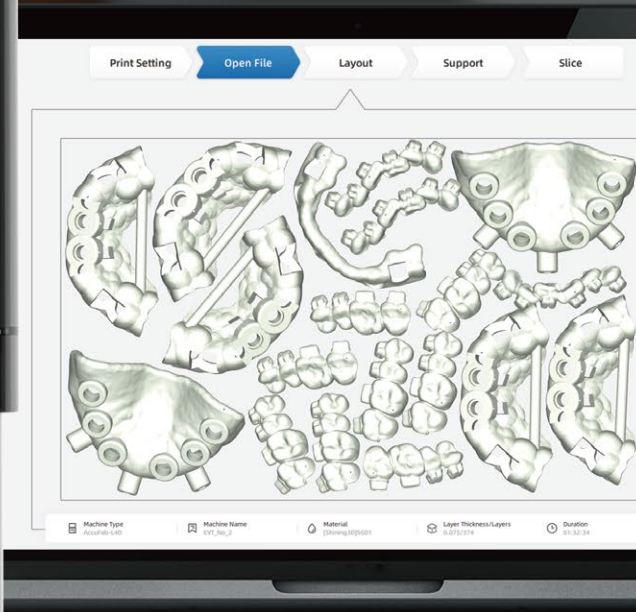


Automatic Calibration

Automatic calibration ensures stable
and consistent printing.

*UVMP stands for UV masked photopolymerization

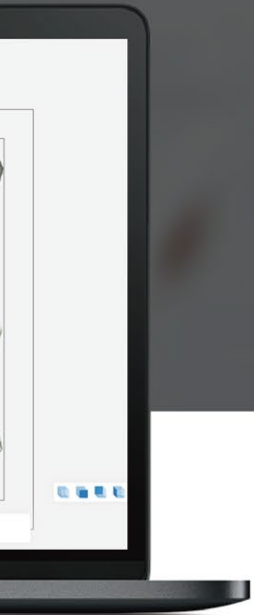




SHINING DENT

Multiple Certified Materials

SHINING DENT features a series of resin materials independently developed by SHINING 3D. These resins can be adopted in various dental printing applications, such as working model, ortho model, customized impression tray, surgical guide and gingiva mask. AccuFab-L4D is your ideal chairside 3D printing solution.



TECHNICAL SPECIFICATIONS

AccuFab-L4D

Printer Size	360 x 360 x 530 mm
Printer Weight	about 19 kg
Print Volume (x/y/z)	192 x 120 x 180 mm
Resolution	3840 x 2400(4K) Px
Print Speed	10-50 mm/h (depends on layer thickness and materials)
Layer Thickness	0.025/0.05/0.075/0.1 mm
Accuracy	± 50 µm
Connectivity	USB/Wi-Fi/Ethernet

*Notice: SHINING 3D reserves the right to introduce modifications or alterations to any of the specifications and images used in this document.



AJJ
HEALTHCARE MANAGEMENT PTE LTD

Imported and Distributed by:

AJJ HEALTHCARE MANAGEMENT PTE LTD
8 Commonwealth Lane, #02-04, Singapore 149555
(+65)6908 4252
www.ajjhealthcare.com