



RETRACTOR



Dental Retractor

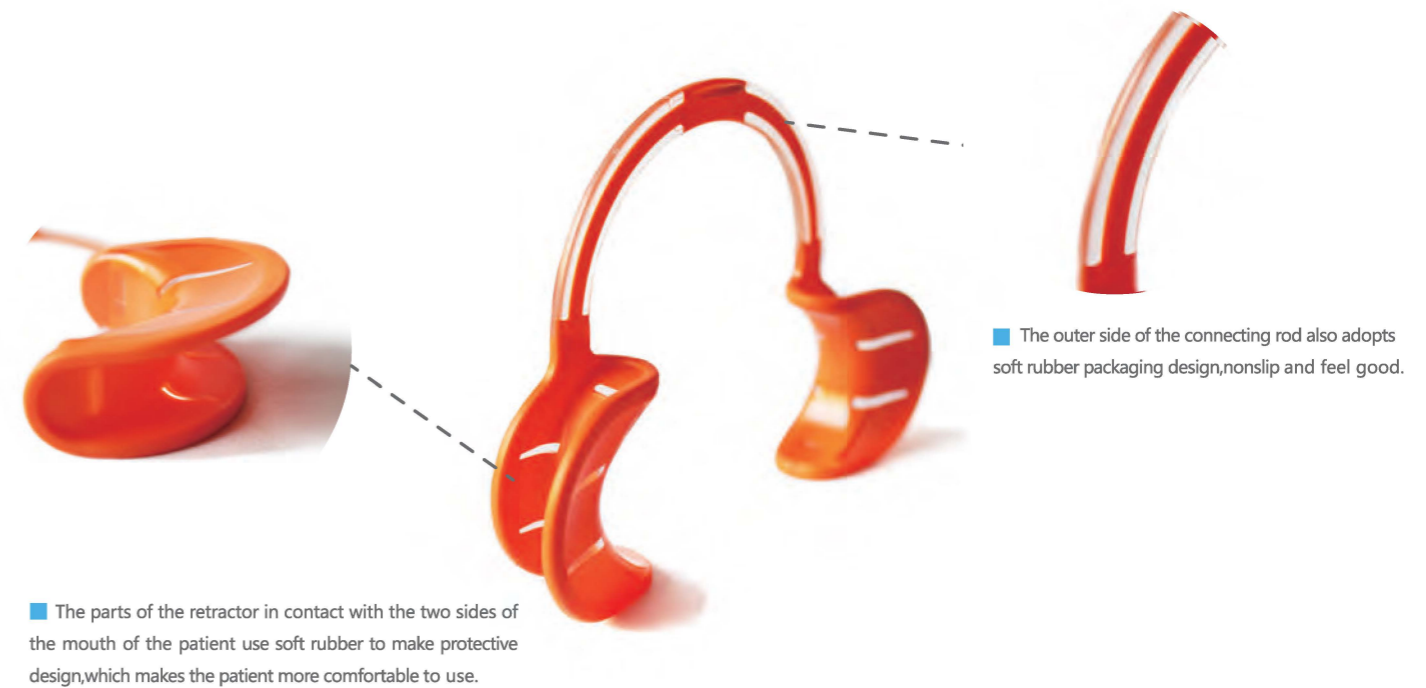
Patent Number: ZL 2019 3 0018928.6



Item :CR10M
Packing:2 pcs/box,100boxes/ctn
Carton Size:460X350X260mm
Weight:5KGS



Advantage:



■ The parts of the retractor in contact with the two sides of the mouth of the patient use soft rubber to make protective design,which makes the patient more comfortable to use.

■ The outer side of the connecting rod also adopts soft rubber packaging design,nonslip and feel good.



AJJ
HEALTHCARE MANAGEMENT PTE LTD

Dental Retractor



The parts of the retractor in contact with the two sides of the mouth of the patient use soft rubber to make protective design, which makes the patient more comfortable to use.



Item: CR10S
Packing: 2 pcs/box, 100 boxes/ctn

Mouth Prop

Patent Number: ZL 2015 3 0162734.5



Easily avoiding patients fatigue by using mouth prop, make patients enjoy a relaxing treatment.

Item: MP01
Packing: 2 pcs/bag, 12 bags/box, 32 boxes/ctn
Carton Size: 440X440X250mm
Weight: (L)13 KGS, (M)9.5 KGS, (S)7.7 KGS

Item No	Specification
MP01L	39.5X39.5X20.4mm
MP01M	34.5X36.5X17mm
MP01S	33X28X17mm

Purple (L) ■
Green (M) ■
Yellow (S) ■



Mouth Prop & Tongue Guard

Patent Number: ZL 2014 2 0507326.9



Tongue guard block tongue moving so that no injury would happen during the whole treatment.

Item: MP02
Packing: 12 sets/box, 20 boxes/ctn
Carton Size: 540X400X490mm
Weight: (L)11.5 KGS, (M)10.5 KGS, (S)9.5 KGS

Purple (L) ■
Green (M) ■
Yellow (S) ■



Cheek Retractor



It consists of C-shaped connecting rod and retractor on both sides. After special processing, the surface is white translucent, smooth, high strength and good toughness.

Item: CR09
Remark: Frosted Surface

Item No	Specification	Carton Size	Packing	Weight
CR09L	132X90X17mm	690X415X320mm	2 pcs/set, 10 sets/box, 20 boxes/ctn	12KGS
CR09M	118X85X17mm	690X415X320mm		11.5KGS
CR09S	97X70X15mm	625X315X265mm		8KGS



Cheek Retractor



This product consists of a semilunar retractor and a handle. During oral treatment, the medical staff can place the retractor on one side of the mouth corner of the patient and gently pull the open lip to provide a clear surgical field vision.

Type: T type
Color: Clear

Item No	Specification	Carton Size	Packing	Weight
CR01L	120X53.5X18mm	430X330X320mm	2 pcs/box, 200 boxes/ctn	6.3 KGS
CR01S	114X42X17mm	360X360X280mm		5.8 KGS



Cheek Retractor



This product is composed of C-shaped connecting rod and retractor on both sides. The material has good strength and toughness. During oral treatment, put it at the corner of both sides of the patient, open the mouth and make it keep a certain degree of opening.

Type: C type
Color: Clear

Item No	Specification	Carton Size	Packing	Weight
CR02L	132X90X17mm	500X360X440mm	2 pcs/box, 200 boxes/ctn	8.2 KGS
CR02M	118X85X17mm			8 KGS
CR02S	97X70X15mm	430X335X290mm	2 pcs/box, 200 boxes/ctn	5.5 KGS



Cheek Retractor



This product is M type design. In oral treatment, medical staff can place it in both sides of the mouth position separately to open the mouth, block the tongue, and provide a clear surgical field vision.

Type: M type
Color: Clear

Item No	Specification	Carton Size	Packing	Weight
CR03L	126X57X51mm	420X420X470mm	2 pcs/box, 147 boxes/ctn	6 KGS
CR03M	106X48X54mm		2 pcs/box, 246 boxes/ctn	8.6 KGS
CR03S	100X44X40mm		2 pcs/box, 246 boxes/ctn	7.5 KGS



Cheek Retractor



This product is a circular and hollow design. In oral treatment, medical staff can place it on both sides of the patient's mouth to open the oral vestibule and provide a clear surgical vision.

Type: O type
Color: Clear

Item No	Specification	Carton Size	Packing	Weight
CR04L	84X80X22mm	440X440X250mm	10 pcs/bag, 100 bags/ctn	6.5 KGS
CR04S	70X68X35mm		2 pcs/box, 120 boxes/ctn	6.2 KGS



Cheek Retractor



This product is composed of double-headed semilunar retractor and handle are formed.

Type: Double head
Color: Clear

Item No	Specification	Carton Size	Packing	Weight
CR05L	167X55X24mm	400X400X370mm	2 pcs/box, 125 boxes/ctn	7.7 KGS
CR05S	145X45X20mm	400X400X370mm	2 pcs/box, 120 boxes/ctn	5.9 KGS



Aligner Chewies

Patent Number: ZL 2018 2 1528611.3



- Mint flaver Juicy peach flaver
- Grape flaver Green apple flaver
- Lemon flaver Watermelon flaver

- Help aligner tray fit teeth closer to make sure reach preset orthodontics force.
- Bite for 5-10 minutes to avoid braces face.
- Gum bite and handle are designed separately,convenience and hygiene.
- △ Triangular prism shape uses wedge-force principle to fit aligner tray for adjacent anterior or premolar region.

- Cylinder is used to fit aligner tray in molar region with greater occlusal force,and it can also be used to exercise bite muscle.
- ◡ Elliptic cylinder is mainly used to fit aligner tray in occlusal surface of posterior teeth.



Item: MP03

	Box	
Packing 1	3 pcs/box,400 boxes/ctn	2 pcs/pouch,12 pouches/bag, 30 bags/ctn
Packing 2	2 pcs/box, 400 boxes/ctn	3 pcs/pouch,12 pouches/bag, 30 bags/ctn

Retainer Retrievers

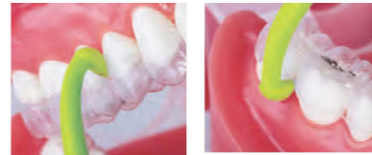
Patent Number: ZL 2019 3 0018952.X



- Red Orange Yellow
- Green Blue Rose

- Retainer retrievers help patients remove appliances cleanly and efficiently.
- Helps patients remove appliances from the buccal side cleanly and efficiently.
- The ring handle is easy to hold by hand when operating.
- This handy tool features specially designed hooks which help to remove clear retainers or aligners with ease.

Item: MP04
Packing: 1 pc/unit,12 units/bag,30 bags/ctn
Carton Size: 290X260X230mm
Weight: 2.1 KGS



Dry Field System Tubing

Patent Number: ZL 2016 2 1097848.1



- White (L) Green (S)

- The Dry Field System completely eliminates saliva and fully exposes both arches making it ideal for all bonding applications,The system is easy to assemble and be inserted and used by a single operator.
- Set salivary absorption,retractor,tongue guard in one.

Item: CR08
Packing: (L)1 set/box,48 boxes/ctn,(S)1 set/box,50 boxes/ctn
Carton Size: (L)440X440X250mm,(S)460X350X260mm
Weight: (L)5.8 KGS,(S)5 KGS

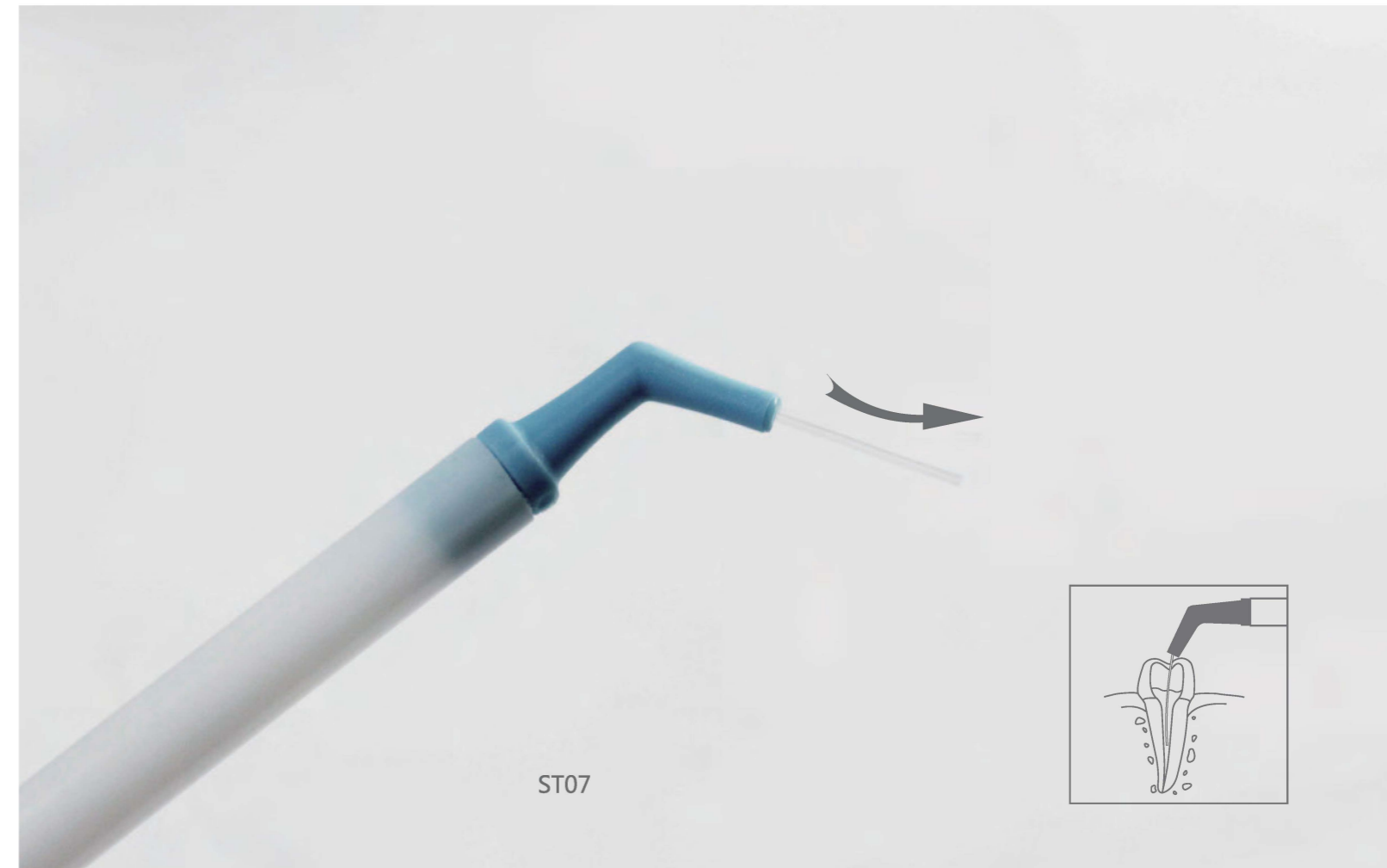


Dry Field System Component



Item: CR0802
Packing: 1 set/box
Remark: Components consist tongue guard,connection arm, position block,2 pcs of silicone tubing and Y-connector.

DISPOSABLE SALIVA EJECTORS



ST07

