

Disposable Dental Air Water Syringe Tips



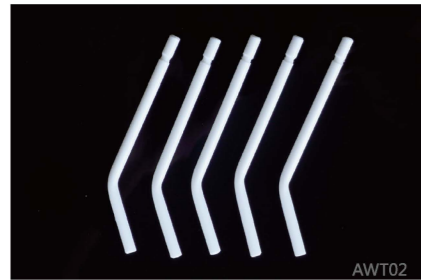
■ AWT01,universal three-in-one Air Water Syringe Tips. The inner tube is made of stainless steel and the outer tube is made of white plastic.

Item: AWT01
Specification: 84X ϕ 3.87mm
Packing: 250 pcs/box,30 boxes/ctn
Carton Size: 290X260X230mm
Weight: 11.6 KGS



White

Disposable Dental Air Water Syringe Tips



■ AWT02,white plastic material. Independent plastic tube structure without core. There are two modes with Syringe to use: water spray and water vapor.

Item: AWT02
Specification: 80X ϕ 3.87mm
Packing: 250 pcs/box,30 boxes/ctn
Carton Size: 290X260X230mm
Weight: 7 KGS



White

Disposable Dental Air Water Syringe Tips



AWT03

■ AWT03,universal three-in-one Air Water Syringe Tips. Hard plastic material. The inner tube is colored and the outer tube is transparent plastic

Item: AWT03
Specification: 92X ϕ 3.87mm
Packing: 250 pcs/box,40boxes/ctn
Carton Size: 420X270X230mm
Weight: 13.1 KGS

Light Yellow
Light Orange
Light Green
Light Blue
Light Purple
White

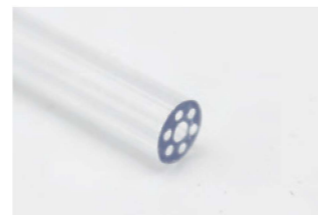


Disposable Dental Air Water Syringe Tips



AWT05

Item: AWT05
Specification: 76X ϕ 3.87mm
Packing: 250 pcs/box,40 boxes/ctn
Carton Size: 340X270X230mm
Weight: 10 KGS



DAM KIT

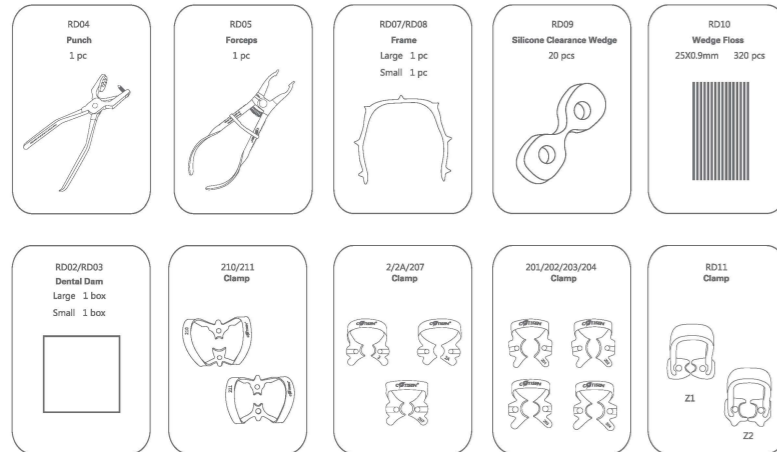


Dental Dam Kit



Item: RD01
Name: Dental Dam Kit
Packing: 1set/box,5boxes/ctn
Carton Size: 450X270X305mm

The Kit Contains:



Advantage:

- Prevent instruments and materials from being inhaled, swallowed or damaging the mouth.
- Keep the operative field clean and dry, reach better performance of bonding materials.
- Isolate bacteria in saliva from splashing onto the tooth to avoid cross infection.
- Block lips and tongue for easy operation.
- Protect soft tissues and avoid injury from instruments and irritating flushing fluid.
- Improved visibility of the operative site.
- Avoid the noise of the suction device.
- Save operation time, and improve treatment efficiency.

Punch



- The punch head is combined with a spring and a tapered structure, which can be automatically adjusted to ensure the taper head is aligned with the center of the cutting edge when drilling.
- Hole diameter size: 0.8/1.0/1.4/1.6/1.8/2.0/2.3.

Item: RD04
Packing: 1 pc/box



Forceps



- The forceps head with anti-slipping design, can prevent it from slipping when stretching the clamps.
- The right side of forceps is printed with positioning line. It can prevent extra stretching during operation, which will reduce resilience of clamps.
- Serrated design, accurate positioning, single hand operation, easy gripping.

Item: RD05
Packing: 1 pc/box



Frame



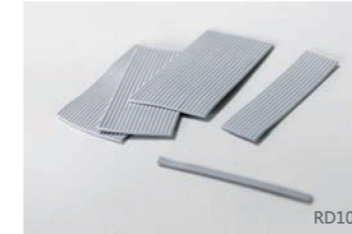
- The frame is made of carbon fiber, with high hardness, strong toughness and is not easy to deform.
- The shape is optimized to enhance the comfort when pulling the patient's mouth.
- The round edge can avoid skin damage, convenient to place the rubber dam.
- Can do heat sterilization.

Item: RD07/RD08
Packing: 1 pc/box,50boxes/ctn
Remark: (RD07)L / (RD08)S

Black



Wedge Floss



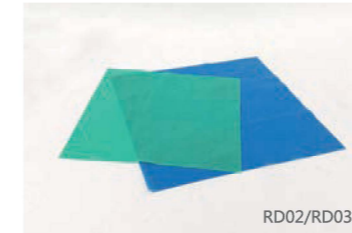
- The wedge floss is with latex material and row design, the dentists can take appropriate quantity according to patients' gum gap.
- Excellent elasticity, in many cases, it can be used as a substitute for traditional clamps, which can quickly and easily fix the rubber dam.

Item: RD10
Packing: 1 set/box,68boxes/ctn
Carton Size: 260X170X180mm

Gray



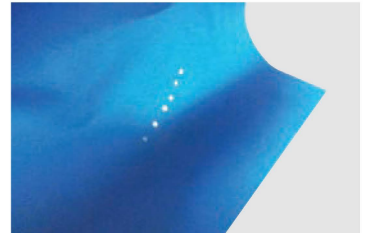
Dental Dam



- Malaysia imported latex, high tear tolerance, good flexibility.
- Blue: 6X6", Green: 5X5"

Item: RD02/RD03
Specification: (RD02)6X6", 152X152mm
(RD03)5X5", 127X127mm
Packing: 1 pc/box,40boxes/ctn

Blue
Green

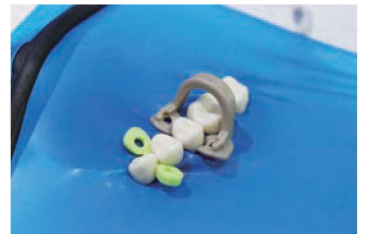


Clamp



- Small size resin clamps for adult premolar large size for adult molar.

Item: RD11
Packing: (Z1+Z2)1 set/box,68boxes/ctn
Carton Size: 260X170X180mm



- The groove design of the clamp is convenient for the instrument to enter the groove and place the rubber dam. The two-wing design of the clamp fits firmly with the teeth. Using special material, the clamping force is stronger, and the matte surface design increases the texture of the product.

Clamp



210/211 Anterior



2/2A/207 Premolar



201/202/203/204 Molar



Z1/Z2

